



Winter Trees Placemat Pattern

Designed by Claudia Porter • Create with Claudia™

email: claudia@createwithclaudia.com

Approximate Finished Size: 12" x 19"

Instagram: [@createwithclaudia](https://www.instagram.com/createwithclaudia) • Website: www.createwithclaudia.com * YouTube: Create with Claudia

About This Placemat

Pull out your favorite holiday or winter scraps and make one (or a whole set) of this Winter Trees placemat. Your holiday table will be festive and beautiful and your guests will want to take one home with them. If you don't want to make placemats, it is a great size for a small wall hanging too.

Please read through all instructions carefully before beginning

Notes Before You Begin

- 1/4 inch seam allowance is used throughout
- Diagrams are not to scale
- General quilting supplies are needed

Fabric and Cutting for One Placemat

For the Large Tree

Piece #	Size	Number of Pieces
1	3 ¼" square	1
2	2 ½" x 6 ½"	1
3	2 ½" x 8 ½"	1
4	2 ½" x 10 ½"	1

For the Star

5	2 ½" square	1
6	1 ½" squares	8

For the Tree Trunks

7	1 ½" x 2 ½"	2
---	-------------	---

For the Small Tree

8	3 ¼" square	1
9	2 ½" x 6 ½"	1

For the Borders

10	1 ½" x 12 ½"	2
11	1 ½" x 17 ½"	2

For the Background Fabrics

12	1 ½" x 10 ½"	1
13	3 ½" squares	2
14	2 ½" squares	10
15	3 ¼" squares	2
16	1 ½" x 4 ½"	5
17	1 ½" x 2 ½"	10
18	1 ½" x 6 ½"	1
19	1 ½" squares	4

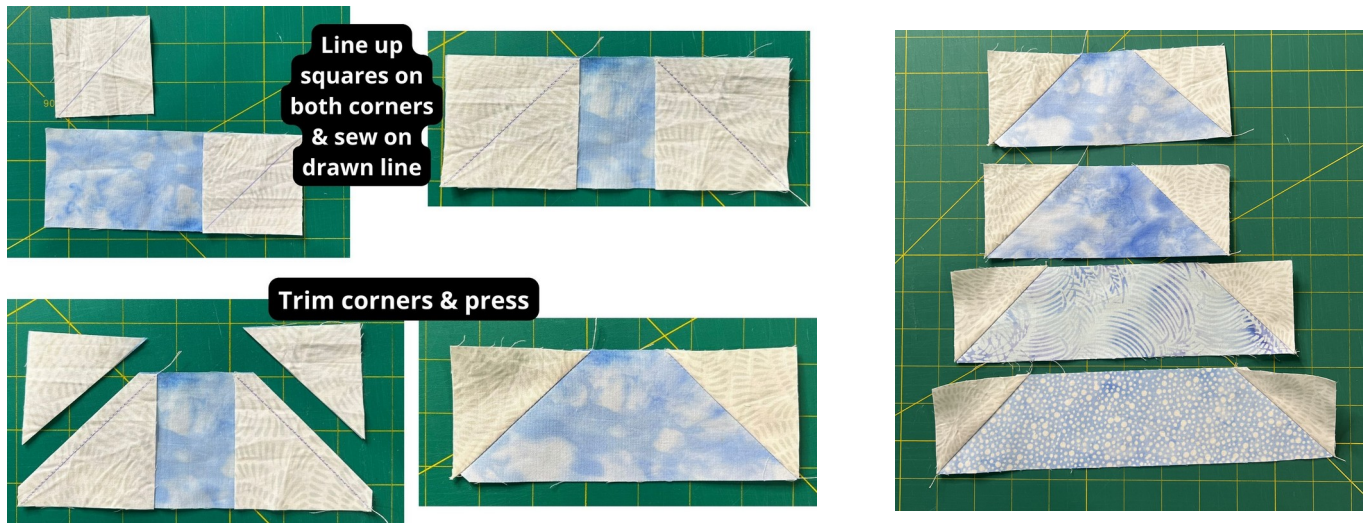
You will also need one piece of backing fabric and one piece of batting cut about 16" x 23" and fabric for binding.

Assembling the Placemat

**Tip: It is important to sew this block in the order shown.
Making the Trees**

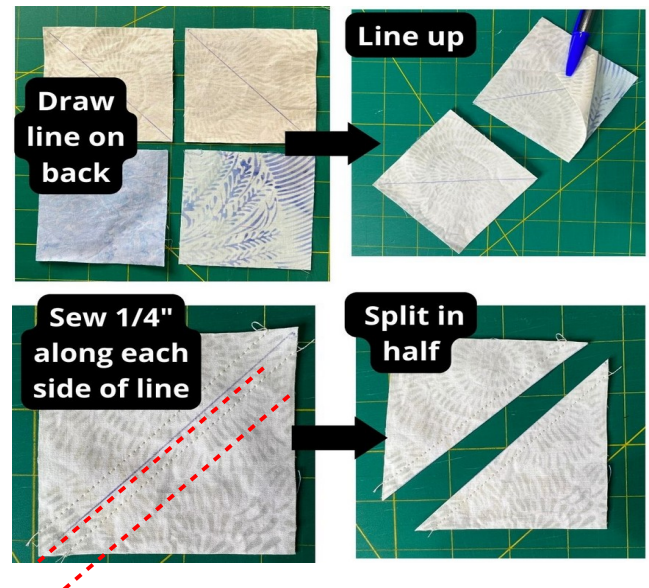
Preparing the Strips

You will need a #2 piece paired up with 2 of the #14 pieces. Draw a diagonal line on the back (wrong side) of both squares. Then line one up on each end of the strip (right sides facing). Sew along the drawn line. Trim away excess on outside of sewn lines. Repeat with #3 piece paired with two of the #14 pieces, #4 piece paired with two of the #14 pieces, and the #9 piece paired with 2 of the #14 pieces. You will have 4 strips.

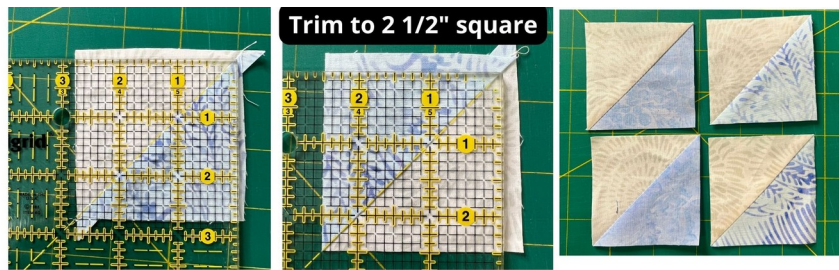


Making the Tops of the Trees

Using the #1 and #15 squares, draw a diagonal line down back (wrong side) of the lighter colored square. Line them up on top of each other (right sides facing). Sew a 1/4 inch seam along each side of the drawn line (shown with dotted line). Then cut the square in half along the drawn line. Press to the dark side. You will have 2 half square triangles. Repeat with the #8 piece and the #15 piece.



Trim the half square triangles down to 2 1/2" square.

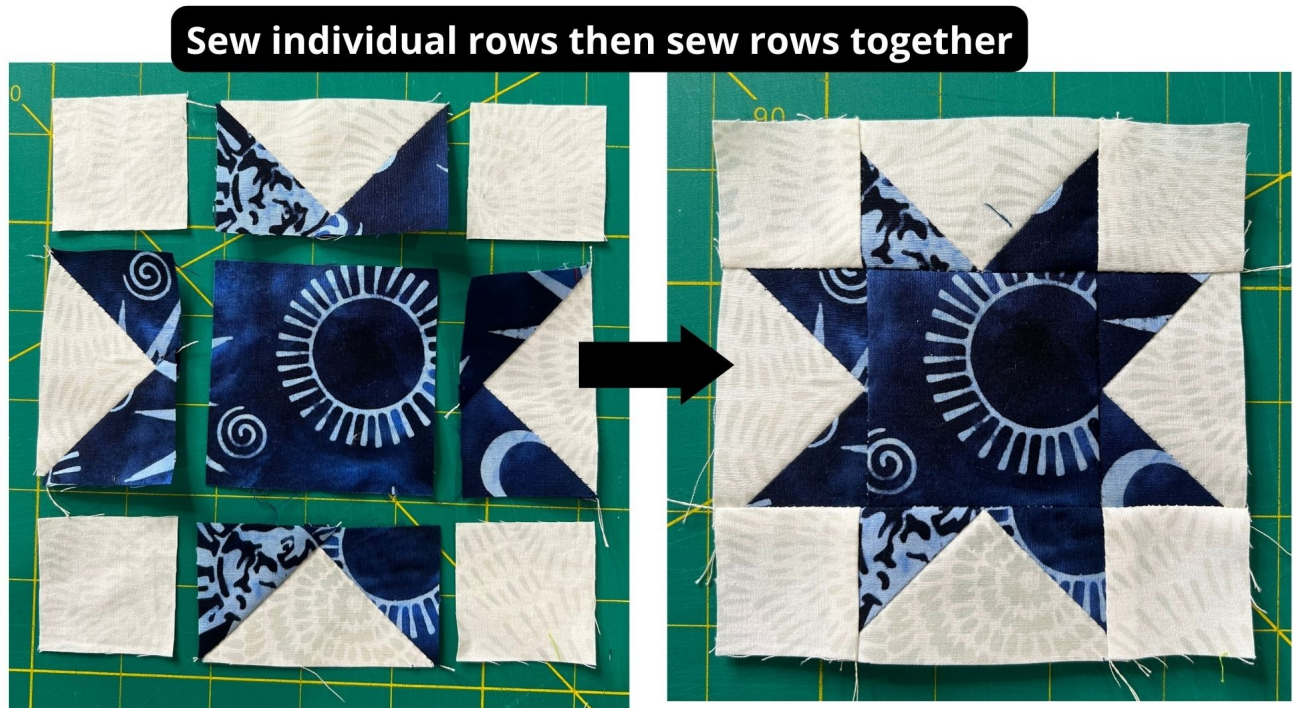


Make the Star

Take four #17 pieces and the eight #6 pieces. Draw a diagonal line on the back (wrong) side of the piece #6 squares. Then line one up on one end of the strip (right sides facing). Sew along the drawn line. Trim away excess on outside of sewn lines and press open. Add another square on opposite end. All four strips #17 pieces should be done this way.



Lay out pieces as shown to assemble star block. The center square is piece #5 and the four corners are pieces #19. Sew the individual rows together and then sew the completed rows together to form the star.

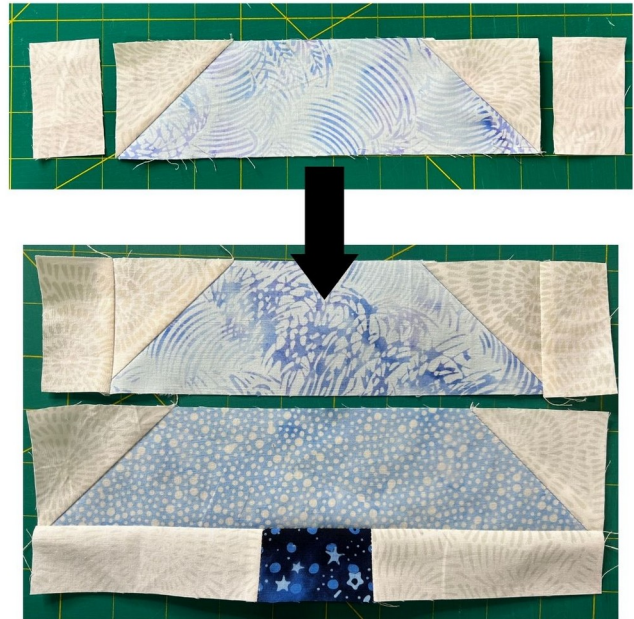


Assemble the Large Tree

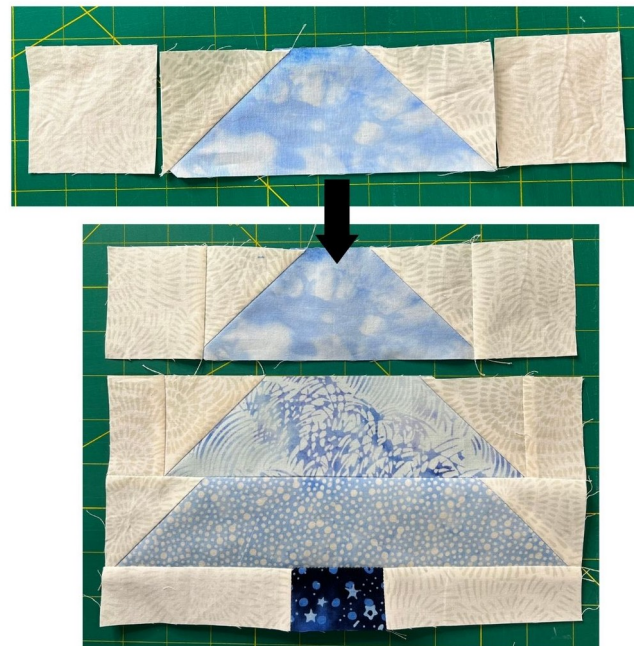
Sew one #16 piece to both sides of piece #7. Add this unit to the bottom of piece #4.



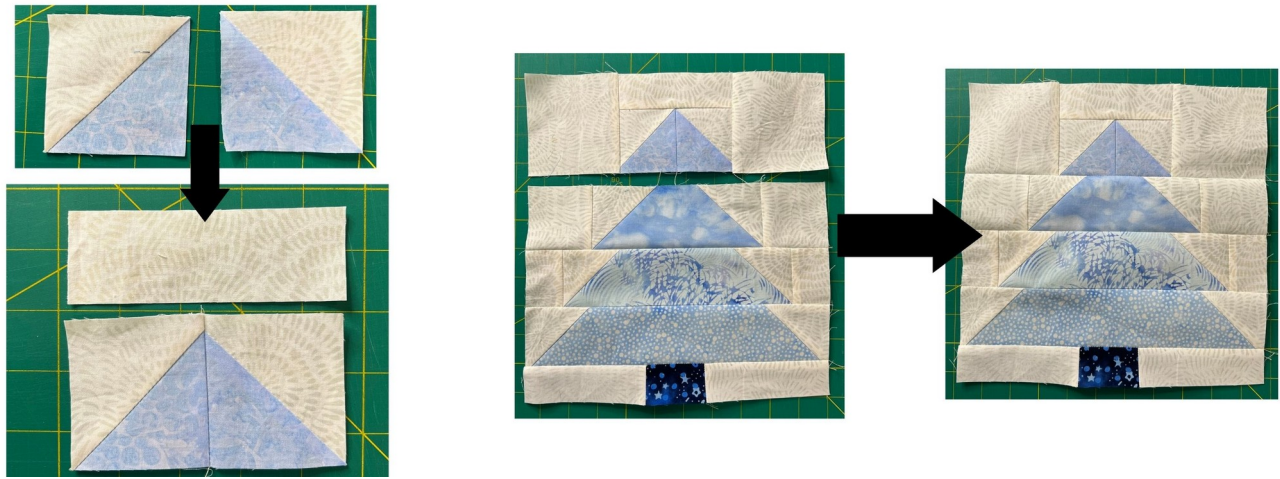
Add a #17 piece to right and left of strip #3. Add this section to top of section made above.



Add a #14 piece to right and left of strip #2. Add this section to top of section made above.

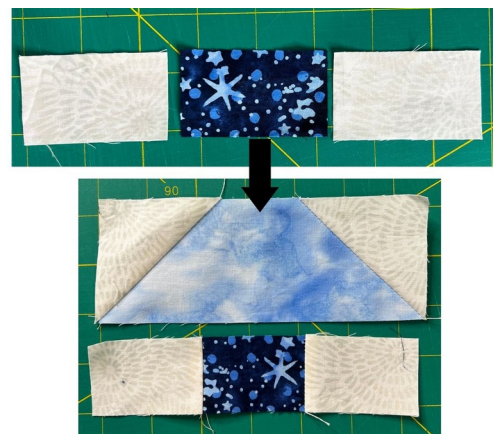


Sew together the two #1 half square triangles to form top of the tree. Add a piece #16 to the top. Then add a piece #13 to the left and the right. Add this section to the top of the tree.

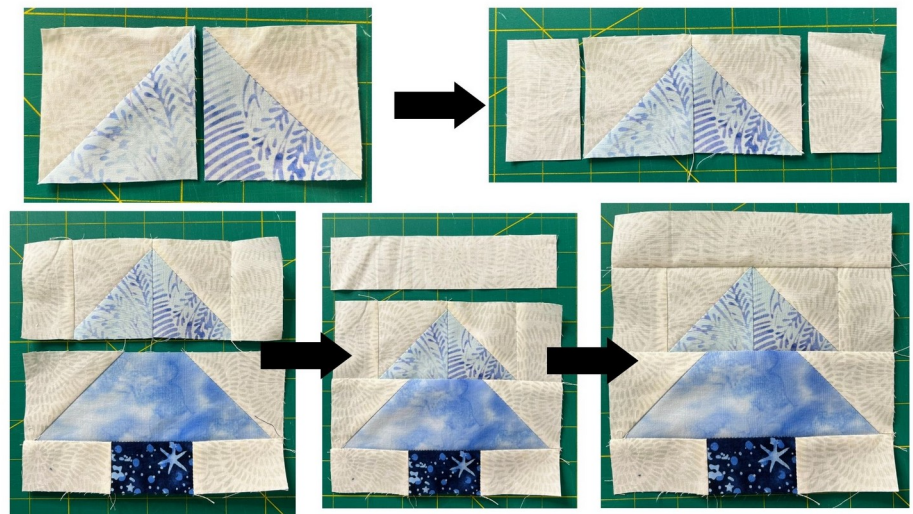


Assemble the Small Tree

Sew a #17 piece to the left and right of #7. Add this to the bottom of #9.



Sew together the two #8 half square triangles to form top of the tree. Add a piece #17 to the left and right. Then add this section to top of small tree. To top of small tree add piece #18.



To the star add a piece #16 to the left and right of the star block. Add this section to the top of the small tree.



Add piece #12 to the left of the small tree section.



Add this section to the right of the large tree section.



Add border pieces #11 to the top and bottom. Then add the #10 pieces to the right and left.



Finishing the Placemat

1. Prepare the backing so that it is about 2 to 3 inches larger than the top on all four sides.
2. Layer the backing, batting, and the top and baste using your preferred method.
3. Quilt as desired.
4. Bind using your preferred method.
5. Enjoy your placemat!

I'd love to see your placemat. Use the tag #createwithclaudia when sharing.

See all of my work at www.createwithclaudia.com